

# VHA 36 PANEL

The VHA36 type cubicle is designed and type tested to meet requirements of IEC 298 & 694 / IS : 3427

- ◆ Fully compartmentalised construction with IP4X degree of protection externally and IP2X between compartments
- ◆ Independent exhaust vent for all HT compartments
- ◆ Integral Earthing Switch (optional)



VHA36 Panel

# VHA 36 PANEL

## BREAKER COMPARTMENT

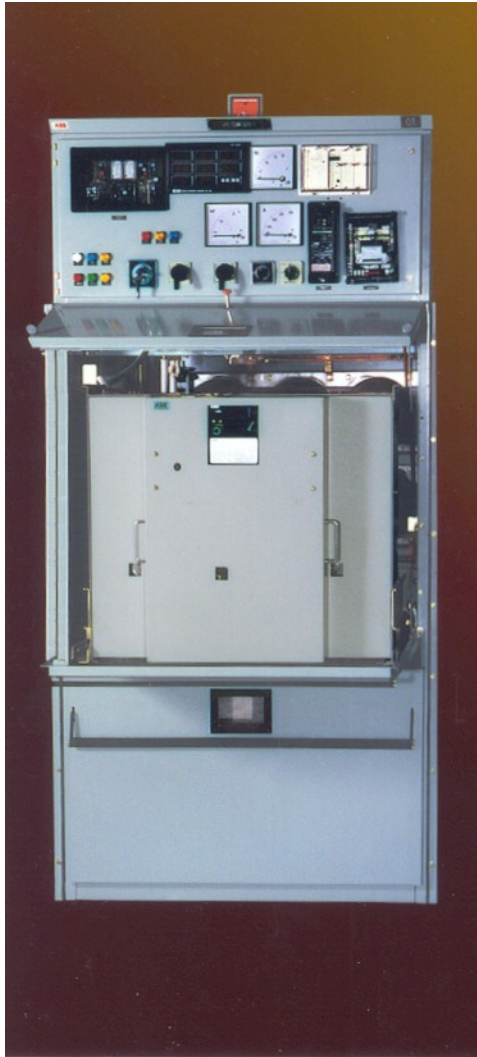
Cassette mounted breaker with 'isolated' position on cubicle front door

## SAFETY FEATURES

- ◆ Racking in/out of breaker from 'test' to 'service' position and vice-versa with cubicle door closed only
- ◆ Mechanical Interlock to prevent racking in/out of breaker, when breaker is in closed position
- ◆ Live part covered by automatic shutters when breaker is racked out
- ◆ Multiple guides for safe, sure and enduring self alignment of fixed and moving power contacts



# VHA 36 PANEL



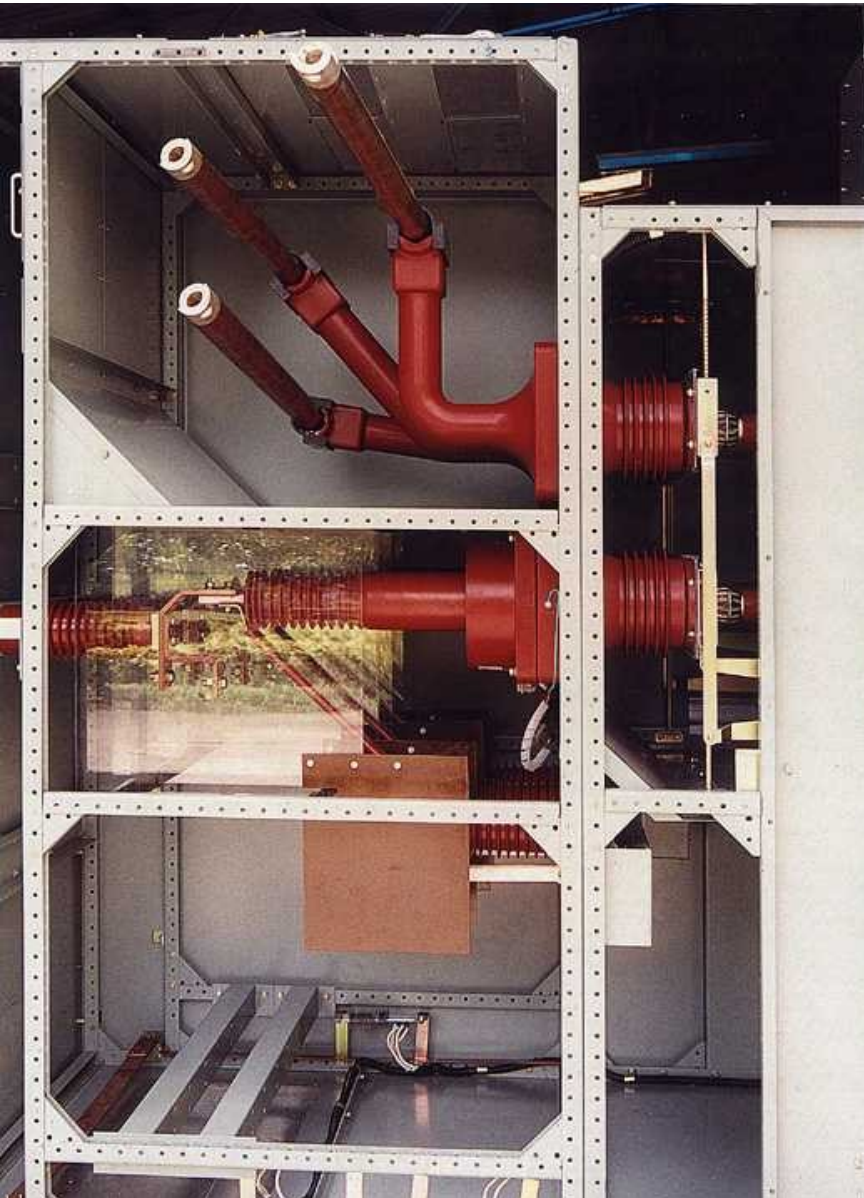
## METERING COMPARTMENT

- ◆ Metering Compartment with numerical /static/ electro-magnetic relays, indicating meters, lamps and control switches
- ◆ Protection and measuring apparatus customised as per requirement

## PT COMPARTMENT

- ◆ Withdrawable line PT provided in the breaker panel
- ◆ Removable fuses mounted on the PT
- ◆ Safety shutters between PT & Cable compartment close automatically on PT withdrawal

# VHA 36 PANEL



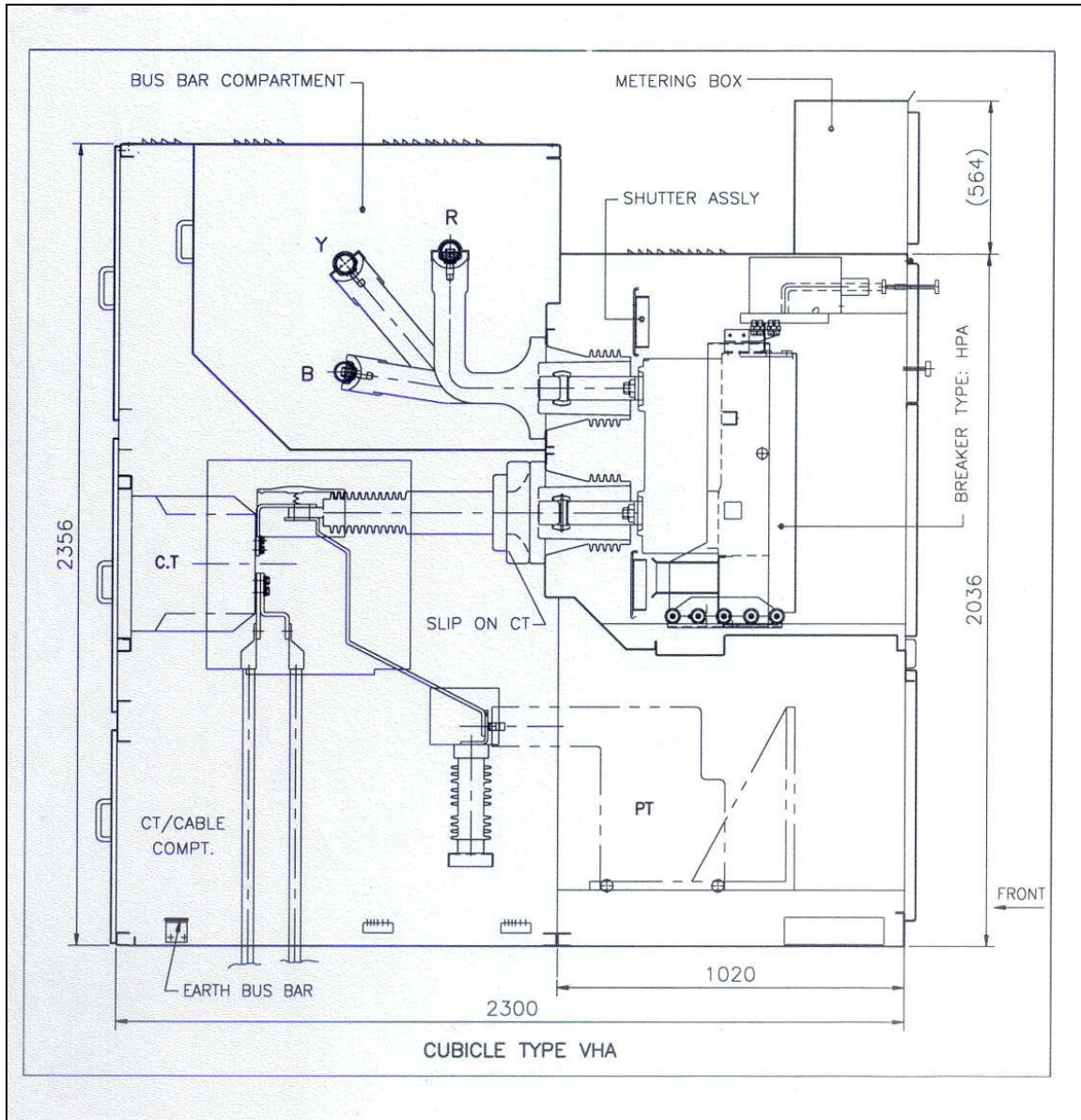
## BUSBAR COMPARTMENT

- ◆ Tubular conductors fixed on specially shaped through bushings
- ◆ Spacious busbar compartment for adequate air clearances
- ◆ Busbars are epoxy powder coated with option of raychem sleeving for insulation
- ◆ Shrouded joints for main horizontal busbars available

## CABLE & CT COMPARTMENT

- ◆ Provision for slip on CTs, leading to substantial reduction in cable compartment size
- ◆ Spacious construction to accommodate 1 set of CTs and 2 runs of 3 core cables
- ◆ Option of rear extension to accommodate extra CTs or cables
- ◆ Adequate height for cable termination

# VHA 36 PANEL



# HPA 36

The HPA type circuit breaker is designed and tested to meet requirements of IEC 56 / IS : 13118

- ◆ Sulphur Hexafluoride (SF6) used as insulation and arc interruption medium
- ◆ Arc control and extinction achieved by puffer principle
- ◆ Operationally safe and reliable in a wide range of ambient temperatures (-)5° to 40°C
- ◆ Capable of interrupting small magnetizing and capacitive currents
- ◆ Features of operating mechanism
  - ◆ O-C-O operation without recharging
  - ◆ Closing spring charged by motor in less than 15 secs
  - ◆ Electrical anti-pumping
  - ◆ Provision for manual recharging
  - ◆ Synchronisation and fast auto reclosure duty



# VHA 36 PANEL

Rated Voltage	kV	36
Rated Frequency	Hz	50
Rated Busbar Current	A	630,1250,1600, 2000, 2500
Short time withstand current (3 sec.)	kA	26.3
Rated Dynamic Peak Withstand Current	kAp	66
Insulation Level:	kVrms/kVp	70/170
Degree of Protection		
- Enclosure		IP4X
- Within the Switchgear		IP2X
Dimensions		
- Width	mm	1216
- Depth	mm	2300
- Height	mm	2500
Approx. Weight with the Circuit Breaker	kg	1500

# HPA 36

<b>TECHNICAL DETAILS</b>		
<b>Description</b>	<b>Unit</b>	<b>Rating</b>
Normal Voltage	kV	36
Insulation Level:	kVrms/kVp	70/170
Normal Current (40 Deg C Ambient)	A	1250, 1600, 2000
Breaking Capacity	kA	26.3
Making Capacity	kAp	66
Short time Withstand Current ( 3 Sec.)	kA	26.3
Operating Sequence		O - 3 min - CO - 3 min - CO & O - 0.3 sec - CO - 3min - CO
Gas Pressure	bar (Abs)	3 - 3.5
Opening time	ms	36 - 45
Arcing time	ms	15
Total Break Time	ms	60
Making Time	ms	75
Weight (approx.)	kg	300